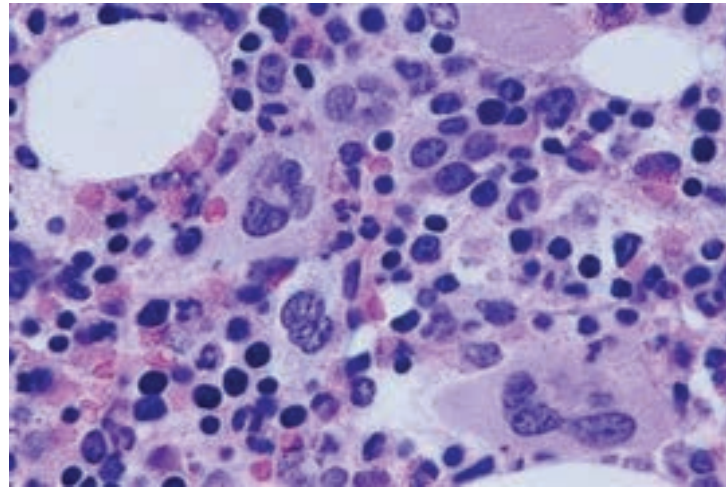




## Hematopathology Consultation Group

The diagnostic facilities in the Department of Pathology and Microbiology includes premier laboratories with the latest technologies in immunohistochemistry, flow cytometry and molecular hematopathology for the diagnosis of hematopoietic malignancies, immunodeficiencies disorders and DNA cell cycle analysis. The Hematopathology Consultation service at the University of Nebraska Medical Center (UNMC) combines an extensive array of diagnostic expertise into a single customer focused consultation program. An integrated report with the diagnosis, phenotype, and when needed, genotype is provided for each case.



Our team of hematopathologist and molecular pathologists provide accurate and timely support during the initial stage of diagnosis, as well as during ongoing disease management. Our team of hematopathologists consult on over 2500 hematopathology cases and over 1000 bone marrow cases annually. Together, our team of pathologies provide over 85 years of expertise

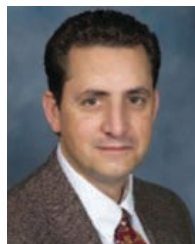
### Highlights of our services:

- Individualized interpretation of case
- Turnaround of consultations within 48 to 72 hours
- Bi-directional interface capabilities to your EMR for orders and results
- Web portal for results so you can access results from anywhere
- Dedicated 24/7 client service department
- Client and patient billing available

### Our team of experts



**Timothy C. Greiner, M.D.**



**Samuel J. Pirruccello, M.D.**



**Allison Cushman-Vokoun, M.D., Ph.D.**



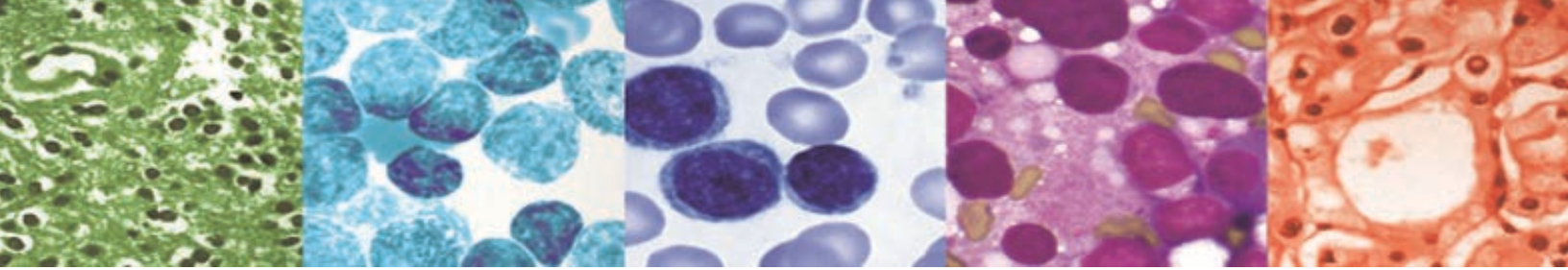
**Catalina Amador, M.D.**



**Hina Naushad, M.D.**



**Ji (Jane) Yuan, M.D., Ph.D.**



Regional Pathology Services is an academic outreach laboratory service at the University of Nebraska Medical Center (UNMC) and provides a full range of clinical, anatomic and consultative pathology services. Our clinical laboratories at UNMC provide a broad array of clinical testing options. Our staff includes nationally and internationally renown pathologists in all sub-specialty areas of pathology and who are available for both primary tissue diagnosis and case consultation. We are committed to providing you with the highest quality service with a strong customer focus.

## Comprehensive and customer focused consultation program with the highest quality, most cost effective diagnostic services available

**Premier Diagnostic Facilities:** The diagnostic facilities in the Department of Pathology and Microbiology include premier laboratories with the latest technology in Immunohistochemistry, a sophisticated, automated laboratory with a menu of over 100 stains which are completed within 24 hours..

**Flow Cytometry:** This full-service laboratory performs more than 7000 assays per year and offers immunophenotyping panels for hematopoietic malignancies and immunodeficiency disorders, as well as DNA cycle analysis.

**Molecular Hematopathology:** Part of a state-of-the-art Molecular Diagnostics Laboratory that performs over 32,000 procedures each year. Gene rearrangement results can be obtained within 72 hours of ordering



For more information and pricing contact one of our client coordinators at 402-559-6420

University of Nebraska Medical Center

## REGIONAL PATHOLOGY SERVICES

Department of Pathology and Microbiology  
981180 Nebraska Medical Center  
Omaha, NE 68198-1180

### CLIENT SERVICES

PHONE: 402-559-6420  
TOLL FREE: 1-800-334-0459  
FAX: 402-559-9497

REGULAR BUSINESS HOURS:  
Mon - Fri | 7 am - 9 pm  
Saturday | 8 am - 3 pm

After Hours, Weekends & Holidays  
ON-CALL PAGER: 402-888-2086

UNIVERSITY OF  
**Nebraska**  
Medical Center