

RPS Pathway Users: MeadCo ScriptX Version Update

Dear Regional Pathology Services Clients,

On April 17, the print control in RPS Pathway, called MeadCo ScriptX, will require a version upgrade for all internet browsers. This MeadCo ScriptX update is required to continue to print specimen labels, requisitions, result reports, and batch sheets.

You will need Administrator permissions—please forward to your IT department to apply required changes before April 17th.

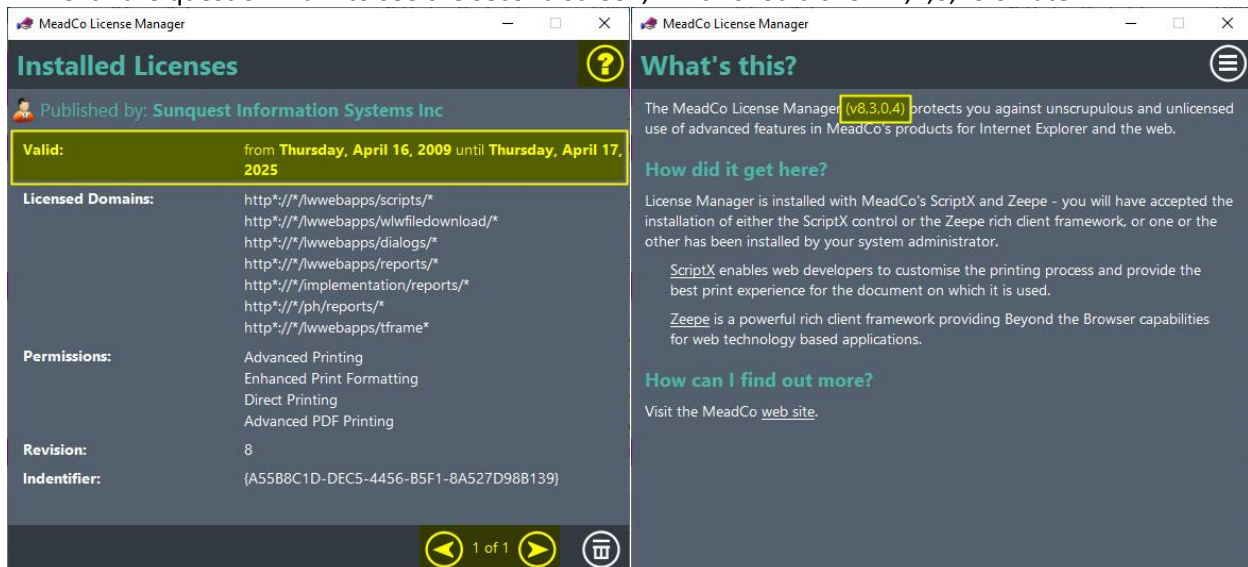
What you need to know

- If you are using a MeadCo version prior to version 7,7,0,20, you will need to upgrade to version 8,3,0,4. To install MeadCo or upgrade to a newer version, you will need administrator rights to your workstation. Your Information Technology (IT) department may need to assist.
- If your IT department blocks downloads of .zip file types, you will need their help to update the MeadCo license. Your IT department will need to temporarily allow the .zip file type for any workstation that uses RPS Pathway and go through the upgrade instructions below.

How to check your MeadCo license and application version

To check your workstation's MeadCo version, complete the following steps:

1. Use the following URL in Internet Explorer to see which version you are on:
<https://support.atlasdev.com/lwwebapps/reports/MeadCoInstalledVersion.htm>
2. Alternately, you can Click Start > Programs > Mead & Company > License Manager.
3. After signing in to RPS Pathway the first screen shown below should show a license that expires on April 17, 2025. In some cases, multiple licenses may be shown, and you will need to select the arrow icon to navigate to see additional licenses.
4. Click the question mark to see the second screen, which should show 7,7,0,20 or later.



The image displays two screenshots of the MeadCo License Manager application. The left screenshot shows the 'Installed Licenses' screen. It features a header with a question mark icon and a user icon. Below the header, it states 'Published by: Sunquest Information Systems Inc'. A yellow box highlights the 'Valid:' section, which reads 'from Thursday, April 16, 2009 until Thursday, April 17, 2025'. Below this, there is a list of 'Licensed Domains' with various URLs, a 'Permissions:' list including 'Advanced Printing', 'Enhanced Print Formatting', 'Direct Printing', and 'Advanced PDF Printing', a 'Revision:' of '8', and an 'Identifier:' '{A5588C1D-DEC5-4456-B5F1-8A527D98B139}'. The right screenshot shows the 'What's this?' help screen. It features a header with a question mark icon and a menu icon. The main text states 'The MeadCo License Manager (v8,3,0,4) protects you against unscrupulous and unlicensed use of advanced features in MeadCo's products for Internet Explorer and the web.' Below this, there are sections for 'How did it get here?' and 'How can I find out more?'. The 'How can I find out more?' section includes the text 'Visit the MeadCo [web site](#).'

- If you log in to RPS Pathway and the license date still shows April 17, 2022, this means your IT department may block .zip file types. Your IT department will need to temporarily allow the .zip file type for any workstation that uses RPS Pathway and complete the upgrade instructions.
- If the application version on the second screen is prior to 7,7,0,20, proceed to the upgrade instructions to install version 8,3,0,4.

Upgrade instructions

If your version is less than 7,7,0,20, follow the instructions below to upgrade.

Important: You must be logged in to Microsoft Windows as an administrator to perform these tasks.

To install and configure the MeadCo ScriptX control:

1. Ensure that you have Windows administrator rights on the workstation.
2. In an Internet Explorer (IE) browser, paste the following URL, and click Enter:
<http://scriptx.meadroid.com/download/user-upgrade-to-current-version.aspx>
3. Under Automatic, click on Continue.
4. Allow the app to make changes.
5. The appropriate 32-bit or 64-bit version of the print control is downloaded.
6. The MeadCo ScriptX license is installed for all users on the workstation.
7. The following confirmation message is displayed indicating the MeadCo version that was installed, either 32bit or 64bit.



from MeadCo



Success

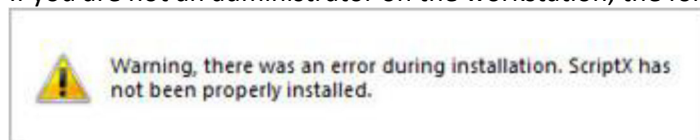
ScriptX 8.3.0.4 is now installed on your device.

If you have upgraded your version of ScriptX then we recommend that you close and restart your browser.

If you attempt to run the upgrade from Chrome or Edge (not IE), the process will fail and the following message will be displayed:

Browser is not Internet Explorer or Edge in IE Mode... Quitting

If you are not an administrator on the workstation, the following message will be displayed:



Installing from within RPS Pathway

If your MeadCo version is prior to 7,7,0,20, the following message will be displayed after you sign in to RPS Pathway. Refer to the upgrade instructions above for an easier installation process.

MeadCo ScriptX Print Control

Atlas[®]LabWorks uses an ActiveX control named "MeadCo ScriptX Print Control" to automate document printing. The control is not required to use Atlas LabWorks. You will still be able to print documents if you choose not to install or are unable to install the control.

When the control is successfully installed, document printing is enhanced by:

- Eliminating the need for user interaction with the browser's Print dialog.
- Automatically setting proper margins on the printed document.
- Configurably directing certain documents (such as specimen labels) to specific printers.

Installing the MeadCo ScriptX Print Control

It has been determined that you do not have the most current print control installed. Please use Microsoft Installer link given below to install print control.

- [MeadCo ScriptX Print Control](#) (Microsoft Installer)

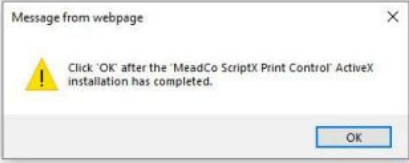
If you have already installed a different version of the MeadCo ScriptX Print Control and suspect that it may be interfering with this current install, you can use this executable to clean your system of the previous install: [MeadCo ScriptX Print Control Removal Tool](#)
Note: This tool must be executed by a local administrator on the system you are attempting to clean.

[After Installing, Click Here to Test the MeadCo ScriptX Print Control](#)

Installed ScriptX Version: 7,5,0,20
Expected ScriptX Version: 7,7,0,20

64 bit Installer for the MeadCo ScriptX Print Control

- [MeadCo ScriptX Print Control \(64 bit\)](#) (Microsoft Installer)



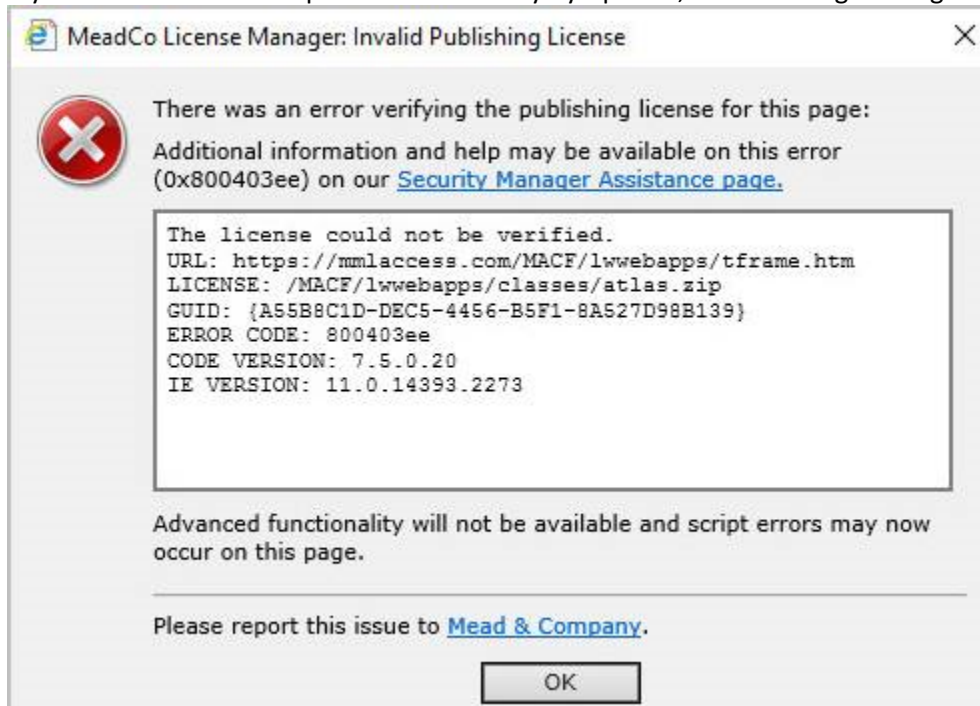
Message from webpage

Click 'OK' after the 'MeadCo ScriptX Print Control' ActiveX installation has completed.

OK

Troubleshooting

If your license does not update automatically by April 17, the following message will be displayed.



MeadCo License Manager: Invalid Publishing License

There was an error verifying the publishing license for this page:
Additional information and help may be available on this error (0x800403ee) on our [Security Manager Assistance page](#).

```
The license could not be verified.  
URL: https://mmaccess.com/MACF/lwebapps/tframe.htm  
LICENSE: /MACF/lwebapps/classes/atlas.zip  
GUID: {A55B8C1D-DEC5-4456-B5F1-8A527D98B139}  
ERROR CODE: 800403ee  
CODE VERSION: 7.5.0.20  
IE VERSION: 11.0.14393.2273
```

Advanced functionality will not be available and script errors may now occur on this page.

Please report this issue to [Mead & Company](#).

OK

This likely means that you fall into one of these two categories:

- You are using a MeadCo version prior to 7,7,0,20. You will need to upgrade to version 8,3,0,4. See the upgrade instructions above.
- Your IT department blocks downloads of .zip file types. You will need their help to update the MeadCo license. Your IT department will need to temporarily allow the .zip file type for any workstation that uses RPS Pathway.

For more information, please refer to the frequently asked questions document on the homepage of our website: www.reglab.org