



University of Nebraska Medical CenterSM

REGIONAL PATHOLOGY SERVICES

DIAGNOSTIC EXCELLENCE. TRUSTED EXPERTISE.

About Us

Regional Pathology Services is a global reference laboratory operating within the University of Nebraska Medical Center's Department of Pathology and Microbiology. As an integrated part of the University since 1974, we provide a full range of clinical, anatomic and consultative pathology services. Our staff includes nationally and internationally renowned pathologists in all subspecialty areas of pathology who are available for both primary tissue diagnosis and case consultation. We are able to utilize efficient support systems to keep costs low for our clients and patients, while constantly maintaining excellent quality and service.

Regional Pathology Services (RPS) is located within the University of Nebraska Medical Center and offers many services not available at any reference laboratory, including:

Full Service Reference Lab

Comprising the most comprehensive array of laboratory tests, including a wide range of specialty lab services.

Nationally and Internationally Recognized Physicians

That serve on national boards, representing every subspecialty area of pathology.

Highest Quality Service

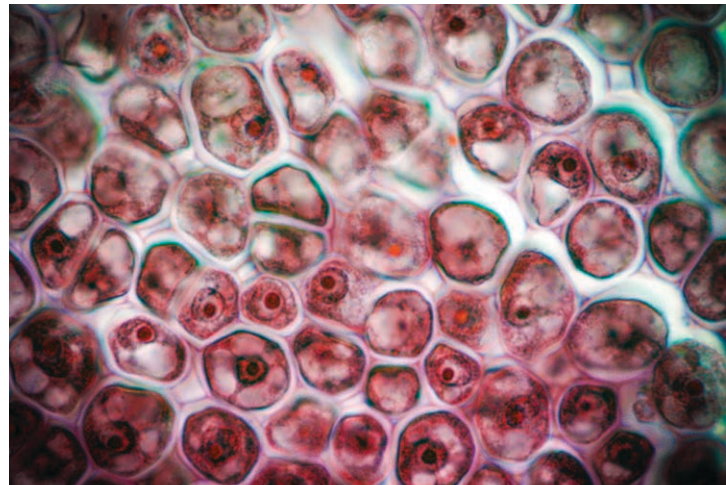
RPS staff and physicians provide the highest quality lab services and serve as models of overall excellence for other clinical laboratories across the nation.

24/7 Call Center

When you call us at RPS you talk to a live person and not an answering device. Most calls are handled by the first person receiving the call and are not transferred.

Website

Contains an online test directory and specimen requirements for all your testing needs:
www.reglab.org



Computer Interfaces to your EMR

At the client's request we will fund and manage an interface to any EMR to receive orders and communicate results.

Specimen Transport and Supplies

Our staff works closely with ground and air couriers and clients to ensure timely and safe delivery of samples. In addition, all supplies needed for specimen transport will be provided.

Continuing Medical Education

Access to a wide range of topics for clinicians and laboratorians to stay up to date on all current and upcoming topics in their field.

Our Mission

To provide access to exceptional, highly advanced, clinical and anatomic pathology consultation services, while providing a superior level of quality and service in the most cost effective manner.

Our Vision

To support the medical community of Nebraska and to become the reference laboratory of choice regionally, nationally and internationally by providing highly specialized and innovative diagnostic testing, educational resources, clinical expertise, and exceptional consultation services.

24 Hour, full service clinical laboratory including:

- Clinical Laboratory Services
- Dermatopathology
- Hepatopathology
- Neuropathology
- Renalpathology
- Cytopathology
- Hematopathology
- Flow Cytometry
- Bone and Soft tissue Tumors
- Hematology and Coagulation
- Histocompatibility
- Urologic Pathology
- Immunology and Serology
- Microbiology and Virology
- Molecular Diagnostics
- Parentage and Forensic Testing
- Transfusion Medicine/Cell Processing
- Molecular Cytogenetics and FISH (Fluorescence in situ hybridization)
- Public Health Testing
- Telepathology / Digital Pathology Services
- Electron Microscopy

Billing Services

Have the capability of providing all billing services for the client, as well as Medicare/Medicaid and/or third party payers.

Call billing at 402-559-7283

Certifications

CAP/CLIA/AABB/FACT/ASHI/ASCLD/JACHO Certifications

COMPLIMENTARY SPECIMEN TRANSPORT KITS PROVIDED

University of Nebraska Medical Center

REGIONAL PATHOLOGY SERVICES

Department of Pathology and Microbiology
981180 Nebraska Medical Center
Omaha, NE 68198-1180

CLIENT SERVICES

PHONE: 402-559-6420
TOLL FREE: 1-800-334-0459
FAX: 402-559-9497

REGULAR BUSINESS HOURS:
Mon – Fri | 7 am–9 pm
Saturday | 8am – 3pm

After Hours, Weekends & Holidays
ON-CALL PAGER: 402-888-2086

UNIVERSITY OF
Nebraska
Medical Center