



Table 1. Result Ranges and Comments

	High Sensitivity Troponin				Delta		
	Normal	Flag High	Flag High Actionable	Critical	Normal	Flag High	Critical
Male	0 to 20 pg/mL	21 to 99 pg/mL	100 to 374 pg/mL	≥ 375 pg/mL	0 to 10 pg/mL	11 to 24 pg/mL	≥ 25 pg/mL
Female	0 to 15 pg/mL	16 to 74 pg/mL	75 to 349 pg/mL	≥ 350 pg/mL	0 to 10 pg/mL	11 to 24 pg/mL	≥ 25 pg/mL
Comment	See Hyperlink for management algorithms.	See Hyperlink for management algorithms. Elevated value indicating possible myocardial injury. Elevated troponin values may be seen in congestive heart failure, pulmonary embolism, hypertension, sustained tachycardia, myocarditis/pericarditis and renal failure.	See Hyperlink for management algorithms. Actionable value indicating myocardial injury. Elevated troponin values may be seen in congestive heart failure, pulmonary embolism, hypertension, sustained tachycardia, myocarditis/pericarditis and renal failure.	See Hyperlink for management algorithms. Value consistent with myocardial infarction. Elevated troponin values may be seen in congestive heart failure, pulmonary embolism, hypertension, sustained tachycardia, myocarditis/pericarditis and renal failure.	See Hyperlink for management algorithms. The Delta Value represents the absolute change in the Troponin value from the most recent previous value (within 7 hours).	See Hyperlink for management algorithms. The Delta Value represents the absolute change in the Troponin value from the most recent previous value (within 7 hours). A Delta value increase of ≥11 pg/mL for initial Troponin indicates ongoing myocardial injury.	See Hyperlink for management algorithms. The Delta Value represents the absolute change in the Troponin value from the most recent previous value (within 7 hours). A Delta value increase of ≥ 11 pg/mL for initial Troponin indicates ongoing myocardial injury.

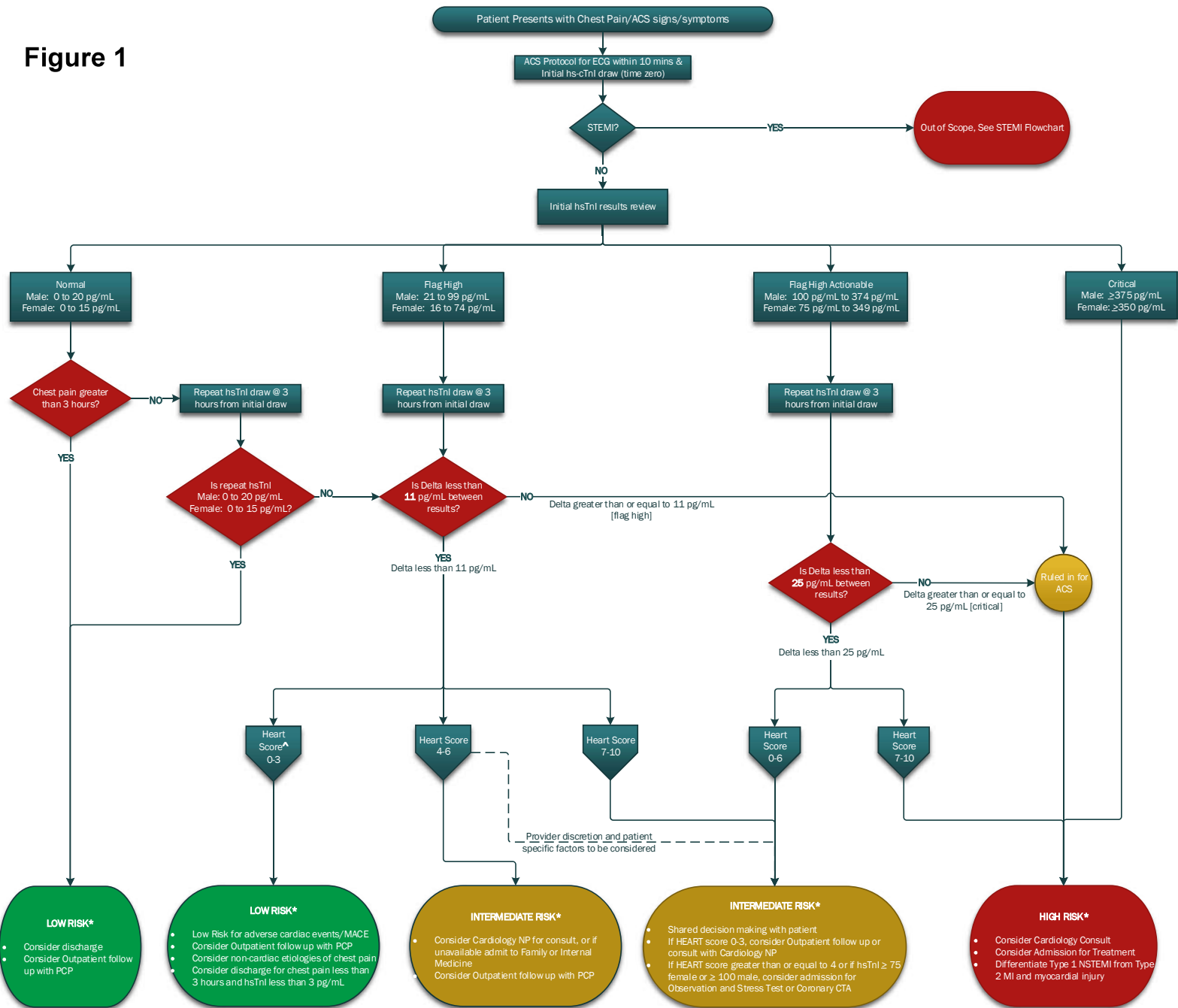
Table 2.

Heart Score	
Variables	Points
History	
Highly Suspicious	2
Moderately suspicious	1
Slightly suspicious	0
ECG	
Significant ST-segment depression	2
Nonspecific Abnormalities	1
Normal	0
Age, years	
>65	2
45-65	1
<45	0
Risk Factors	
3 or more risk factors	2
1 or 2 risk factors	1
No risk factors	0
High Sensitivity Troponin I	
>3 x normal limit	2
Males: >60 pg/mL	
Females: >45 pg/mL	
1-3 x normal limit	1
Males: >20 pg/mL but ≤60 pg/mL	
Females: >15 pg/mL but ≤45 pg/mL	
≤ Normal limit	0
Males: ≤20 pg/mL	
Females: ≤15 pg/mL	
Total	Range 0-10
Low risk is 0 to 3 points, moderate risk 4 to 6 points, and high risk ≥7 points	

1. Six AJ, Backus BE, Kelder JC. Chest pain in the emergency room: value of the HEART score. *Neth Heart J.* 2008 Jun;16(6):191-6
2. Mahler SA, Riley RF, Hiestand BC, et al. The HEART Pathway randomized trial: identifying emergency department patients with acute chest pain for early discharge. *Circ Cardiovasc Qual Outcomes.* 2015;8:195–203.

If you have questions or concerns about this issue please contact Dr. Sam Pirruccello (phone: 402-559-7707 or 402-763-3157, pager: 402-888-1640, e-mail: spirrucc@unmc.edu).

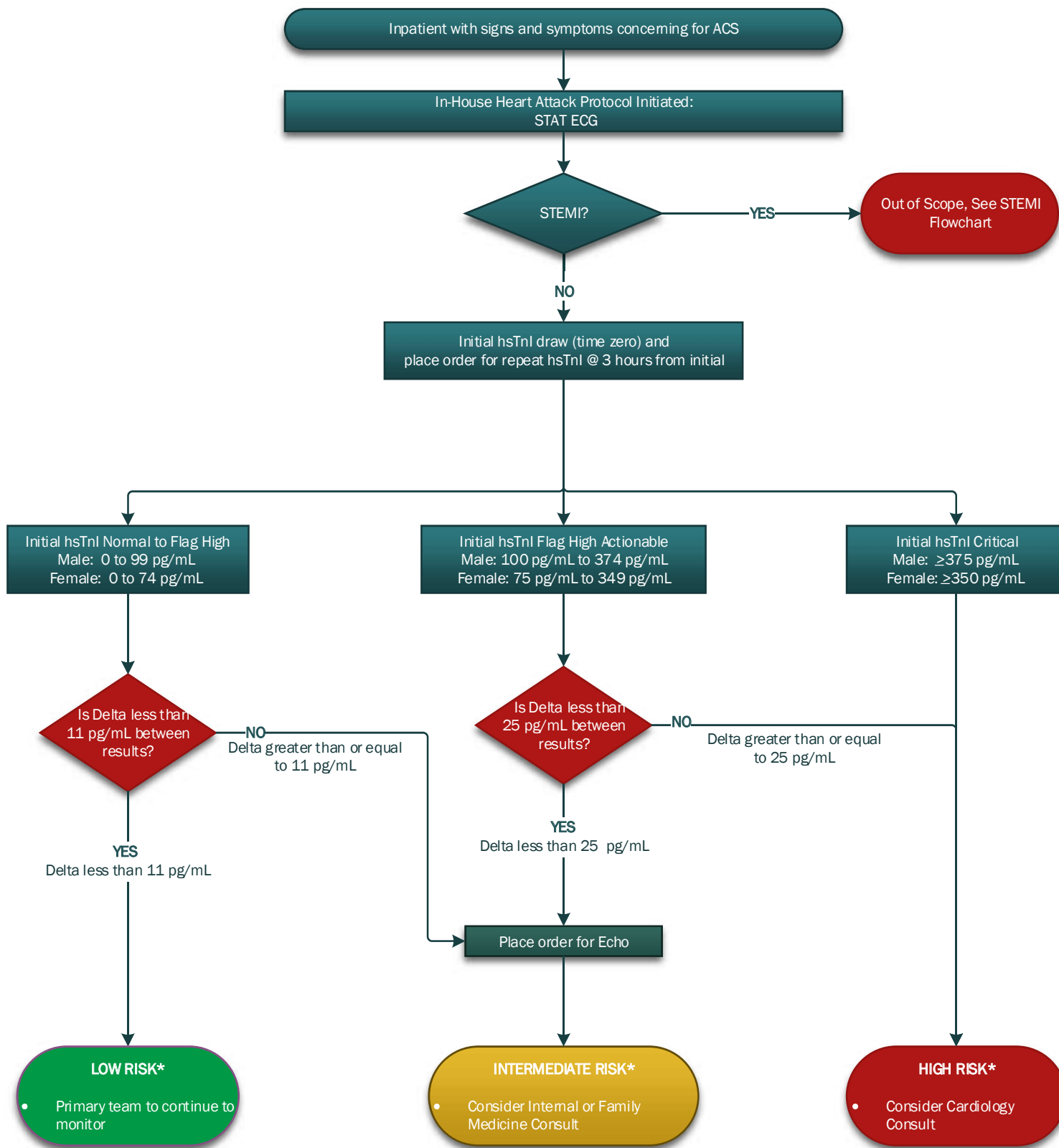
Figure 1



^ Range of high sensitivity troponin may be higher than the conventional Troponin I, use clinical judgement; patient may be at higher risk.

* Algorithms or Clinical Decision Pathways may not account for unique patient factors (e.g. social determinants of health) or rare / complex clinical situations. Provider clinical judgement may overrule this algorithm in some cases.

Figure 2



*Algorithms or Clinical Decision Pathways may not account for unique patient factors (e.g. social determinants of health) or rare / complex clinical situations. Provider clinical judgement may overrule this algorithm in some cases.