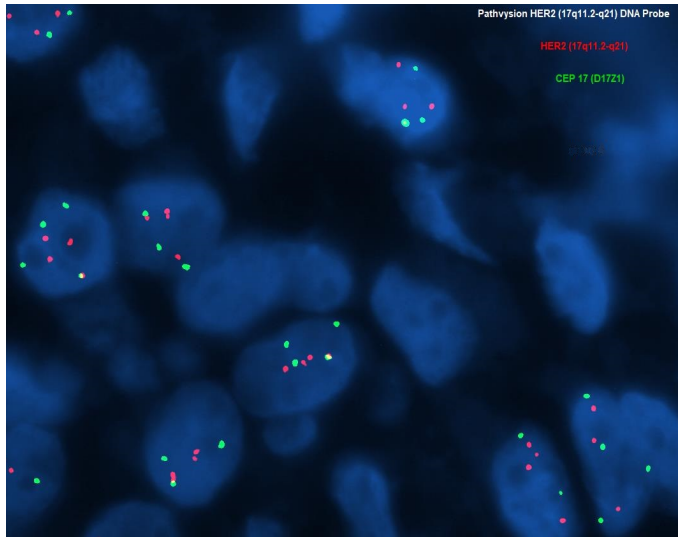

New Test Highlight: Her2/neu Gene Amplification by FISH in non-Breast Cancer Specimens

Dear Regional Pathology Services Clients,

The Human Genetics Laboratory will now offer FISH analysis for Her2/neu (*ERBB2*) gene amplification in non-breast cancer specimens, in addition to breast carcinoma.

New Test

FISH-HER-2/neu Amplification in non-breast cancer specimens—



Amplification of the *ERBB2* (*HER-2/neu*) gene can be used to establish eligibility for the anti-*ERBB2* (HER2) therapies, such as Herceptin (trastuzumab), in patients with breast, gastroesophageal, and colorectal carcinomas, and other tumors, especially in cases that are equivocal (2+) for Her2 expression by immunohistochemistry. Amplification of the *ERBB2* gene can be detected in interphase FISH studies performed on formalin-fixed paraffin embedded (FFPE) tissue utilizing a dual color FISH system.

Cut-offs for FISH reporting will utilize the 2018 CAP/ASCO guidelines for breast cancer in all tumors except gastroesophageal carcinoma (GEC). Specific Group 1-5 designation will only be used for breast carcinomas.

Additional Information: For more information about HER-2/neu interpretation criteria, collection, and ordering, see our test directory [FISH HER-2/neu non-breast](#).

Additional Test Offerings

FISH-HER-2/neu Amplification Associated with Breast Cancer—Order FISH testing to confirm the presence of HER-2neu amplification in breast cancer cases with 2+ by immunohistochemistry or at the discretion of the physician.

Additional information: For more information about this test, see our test directory [FISH-HER-2/neu Amplification in Breast Cancer](#).

Breast Tumor Profile—includes immunohistochemistry stains for Estrogen/progesterone receptor, c-erB-2/HER2, and Ki67 by IPOX. HER-2/neu by FISH as indicated.

Additional information: For more information about this test, see our test directory [Breast Tumor Profile](#).

Make Regional Pathology Services Your Partner in Clinical and Anatomic Testing

Contact an account manager today rpssupport@unmc.edu

Contact Regional Client Services

Call: 800-334-0459 | email: pathclientservrps@unmc.edu