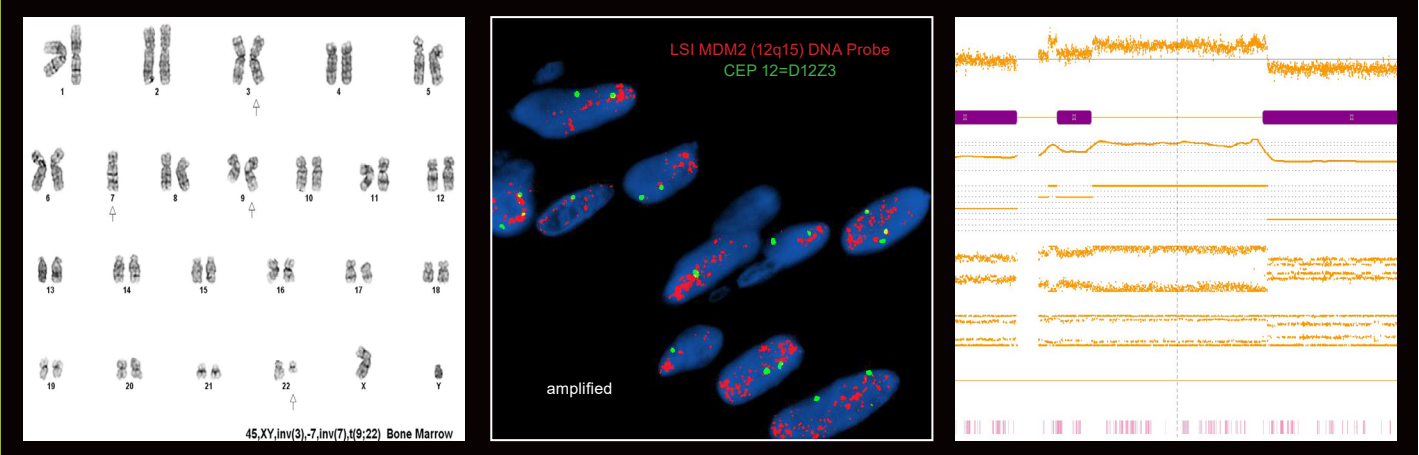


Oncology Testing Services

Hematology | Oncology | Lymphoma | Solid Tumor

v21.1



CHROMOSOME ANALYSIS

- Performed on bone marrow, peripheral blood, lymph node biopsy, solid tumor tissue, and other body fluid specimens
- Identifies numerical and structural chromosomal aberrations with diagnostic and prognostic implications
- Monitors response to therapy, disease progression, and treatment-related secondary malignancies

FLUORESCENCE *IN SITU* HYBRIDIZATION (FISH)

As new assays are validated, our oncology FISH test menu is continually updated. Visit us online or contact our laboratory with questions regarding probe availability.

- Performed on all oncology specimens accepted by our laboratory
- Detects diagnostic and prognostic aberrations of interest
- Monitors response to therapy and opposite sex transplant status
- Utilizes an indication-specific testing approach for all specimen types
 - Single probes for gene or chromosome of interest
 - Multi-probe panels for specific diagnoses (e.g., ALL, AML, CLL, CML, MDS, MPD, Multiple Myeloma, and Lymphoma [including specific subtypes])
 - Custom probes for rare cancers; including solid tissue tumors
- Allows for STAT results to be communicated to referring health care provider within 24 hours of specimen receipt

MICROARRAY ANALYSIS

- Allows for testing on fresh and fixed specimens, including those specimens of suboptimal quality or with low mitotic indexes
- Provides high resolution, global assessment of the genome
- Detects loss, gain, and amplification of known and novel disease-associated regions of the genome at a higher resolution than Chromosome Analysis and FISH
- Identifies loss of heterozygosity (LOH), which is particularly significant in regions of the genome that contain tumor suppressor genes

INDICATIONS FOR TESTING

Hematologic Disorders / Lymphoma

- ◆ Anaplastic large cell lymphoma
- ◆ Burkitt lymphoma
- ◆ Diffuse large B-cell lymphoma
- ◆ Follicular lymphoma
- ◆ Leukemias (ALL, AML, CLL, and CML)
- ◆ MALT lymphoma
- ◆ Mantle cell lymphoma
- ◆ Marginal zone lymphoma
- ◆ Multiple myeloma and other plasma cell diseases
- ◆ Myelodysplastic syndromes (MDS)
- ◆ Myeloproliferative disorders (MPD)
- ◆ Non-Hodgkin lymphoma
- ◆ Waldenström's macroglobulinemia / lymphoplasmacytic lymphoma

Solid Tissue Tumors

- ◆ Bladder cancer
- ◆ Bone and soft tissue tumors
- ◆ Carcinomas
- ◆ Neurological cancer, including neuroblastoma
- ◆ Sarcomas